

Moment Series

+ Benchtop Style

Moment series are used for cleaning small size utensils.



Moment-F2



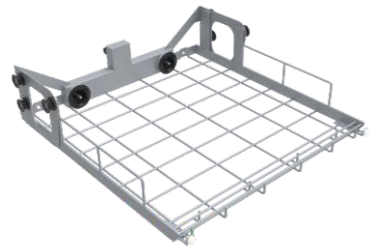
Specifications:

Series	Item	Moment-2	Moment-F2
Moment	Dimension	W612*D750*H685mm +Feet10-24mm adjustable	W612*D750*H685mm +Feet10-24mm adjustable
	Chamber volume	126L(Built-in light control)	126L(Built-in light control)
	Number of cleaning layers	1-2layers	1-2layers
	Circulation pump flow rate	320L/min	320L/min
	Heating Power	4kw/9kw	4kw/9kw
	Electricity	220V/380V	220V/380V
	Drying way	Ecody	Hot air drying
	Instillation method	Benchtop	Benchtop

Feature Description

Series	Item	Moment-2/ Moment-F2
Moment	Operation interface	Microcomputer intelligent control.OLED display, water proof Stainless steel metal buttons with 3 shortcut program keys Support Chinese/Russian/English three languages
	Programs	35 Default,100 user-defined
	Password	Multi-level password protection
	Door	Automatic opening door with viewing window
	Baskets	Modularity basket, one layer can put 2 baskets
	Detection& tracking system	Conductivity detection function(Optional); Printingfunction(Optional); Data storage function
	Wash start delay	Wash start delay function & Delay shutdown function

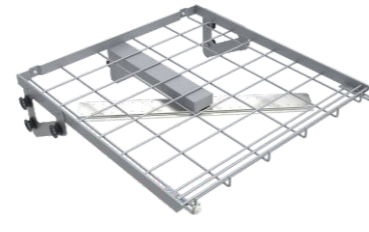
Module Frame



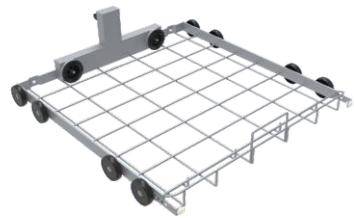
- Upper or Middle level basket frame FA-Z01**
- With two connectors
 - Used to connect 2 injection baskets
 - Auto self-sealing docking valve
 - H139, W529, D570mm



- Upper or Middle level basket frame FA-Z03**
- To load non-injection baskets
 - Built-in spray arm
 - H183, W530, D569mm



- Upper or Middle level basket frame FA-Z05**
- To load non-injection baskets
 - Built-in spray arm
 - H139, W529, D574mm



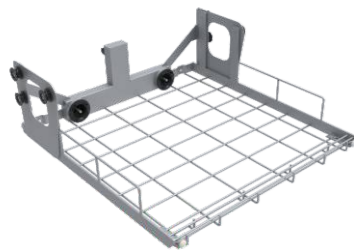
- Lower level basket frame FA-Z02**
- With two connectors
 - Used to connect 2 injection baskets
 - Auto self-sealing docking valve
 - H148, W531, D577mm



- Lower level basket frame FA-Z04**
- To load non-injection baskets
 - H83, W531, D560mm



- Lower level basket frame FA-Z06**
- Double levels
 - To load non-injection baskets
 - Built-in spray arm
 - H230, W528, D584mm



- Lower level basket frame FA-Z07**
- With two connectors
 - Used to connect 2 injection baskets
 - Auto self-sealing docking valve
 - H182, W529, D564mm



- Full frame injection module FA-Z11**
- 38 pipettes can be loaded in three layers
 - 1st Row:10pcs 10-100ml pipettes,H550mm
 - 2nd Row:14pcs 10-25ml pipettes,H500mm
 - 3rd Row:14pcs 1-10ml pipettes,H440mm
 - H373, W531, D582mm

Cleaning Module



- Injection Module 3 injections FA-K03**
- For 500-2000ml Erlenmeyer flasks,Reagent bottle,Blue cap bottle,500-1000ml Volumetric flask and so on.
 - Injector nozzle: $\phi 6 \times H230$ mm
 - H258, W194, D482mm



- Injection Module 9 injections FA-L09**
- For 500-2000ml Erlenmeyer flasks,Reagent bottle,Blue cap bottle,500-1000ml Volumetric flask and so on.
 - Injector nozzle: $\phi 6 \times H230$ mm
 - H263, W499, D505mm



- Injection Module 10 injections FA-K10**
- For 100-500ml Erlenmeyer flasks, Reagent bottle,Blue cap bottle, Volumetric flask and so on.10-100ml cylinder.
 - Injector nozzle: $\phi 6 \times H230$ mm
 - H249, W140, D482mm



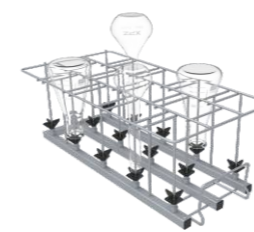
- Injection Module 10 injections FA-K11**
- For 100-500ml Erlenmeyer flasks,Reagent bottle,Blue cap bottle, Volumetric flask and so on.10-100ml cylinder.
 - Injector nozzle: $\phi 6 \times H230$ mm
 - H249, W140, D482mm



- Injection Module 10 injections FA-K11/1**
- For 250-500ml Erlenmeyer flasks, Reagent bottle,Blue cap bottle,Volumetric flask and so on.
 - Injector nozzle: $\phi 6 \times H130$ mm
 - H179, W240, D505mm
 - Holder's height can not adjustable



- Injection Module 12 injections FA-K12/1**
- Suitable for $\phi 3.5$ mm Viscometer
 - Injector nozzle: $\phi 2.5 \times H110$ mm $\phi 6 \times H230$ mm
 - H249, W172, D482mm



- Injection Module 14 injections FA-K14**
- For 50-250ml Erlenmeyer flasks,Volumetric flask,10-50ml cylinder and so on.
 - Injector nozzle: $\phi 4 \times H160$ mm
 - H179, W163, D482mm



- Injection Module 15 injections FA-K15**
- For 50-250ml Erlenmeyer flasks, Reagent bottle,Blue cap bottle,Volumetric flask and so on.
 - Injector nozzle: $\phi 4 \times H160$ mm
 - H179, W175, D482mm



- Injection Module 18 injections FA-K18**
- For 100-250ml Erlenmeyer flasks,Reagent bottle,Blue cap bottle,10-50ml cylinder and so on.
 - Injector nozzle: $\phi 4 \times H140$ mm
 - H167, W232, D482mm

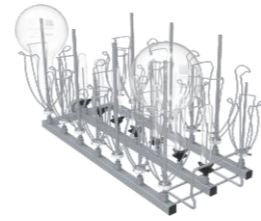
Cleaning Module



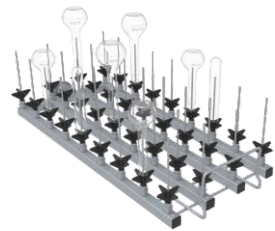
**Injection Module 21 injections
FA-K20**
 ■For 50-150ml Erlenmeyerflasks, Reagent bottle, Volumetric flask ,10-50ml cylinder and so on.
 ■Injector nozzle: $\phi 4 \times H160\text{mm}$
 ■H179, W192, D482mm



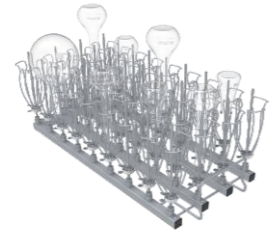
**Injection Module 21 injections
FA-K21**
 ■For 50-150ml Erlenmeyer flasks, Reagent bottle, Blue cap bottle, Volumetric flask and so on.
 ■Injector nozzle: $\phi 4 \times H160\text{mm}$
 ■H179, W192, D482mm



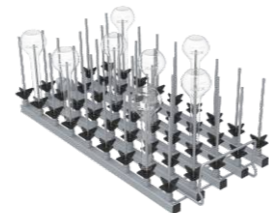
**Injection Module 21 injections
FA-K22**
 ■For 50-150ml Erlenmeyer flasks, Reagent bottle, Blue cap bottle, Volumetric flask and so on
 ■Injector nozzle: $\phi 2.5 \times H110\text{mm}$
 $\phi 4 \times H160\text{mm}$ $\phi 6 \times H230\text{mm}$
 ■H249, W192, D482mm



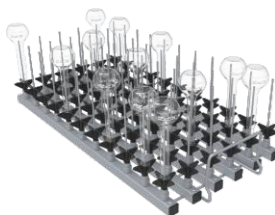
**Injection Module 36 injections
FA-K30**
 ■For 25-100ml Erlenmeyer flasks, Reagent bottle, Volumetric flask , 5-10ml test tube and so on.
 ■Injector nozzle: $\phi 2.5 \times H110\text{mm}$
 ■H129, W200, D482mm



**Injection Module 36 injections
FA-K31**
 ■For 25-100ml Erlenmeyer flasks, Reagent bottle, Volumetric flask and so on
 ■Injector nozzle: $\phi 4 \times H160\text{mm}$
 ■H179, W200, D482mm



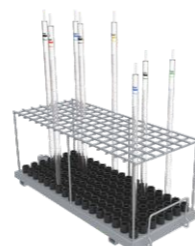
**Injection Module 44 injections
FA-K44**
 ■For 25-50ml Volumetric flask, test tube, vials and so on
 ■Injector nozzle: $\phi 4 \times H140\text{mm}$
 ■H159, W215, D482mm



**Injection Module 66 injections
FA-K66**
 ■For 25ml Volumetric flask, test tube ,vials and so on
 ■Injector nozzle: $\phi 2.5 \times H110\text{mm}$
 ■H129, W215, D482mm



**Injection Module 119 injections
FA-K90**
 ■For 1.5ml vials specially
 ■Injector nozzle: $\phi 2.5 \times H53\text{mm}$
 ■H76, W190, D488mm



**Injection Module 119 injections
FA-K91**
 ■For pipettes specially
 ■H191, W190, D488mm

Cleaning Module / Basket / Cover



**Injection Module 65 injections
FA-M65**
 ■Can load 28pcs pipettes, 28pcs vials, 9pcs Erlenmeyer flasks, volumetric flask, cylinder and so on.
 ■Injector nozzle: $\phi 2.5 \times H110\text{mm}$;
 $\phi 4 \times H160\text{mm}$; $\phi 6 \times H230\text{mm}$
 ■H257, W190, D488mm



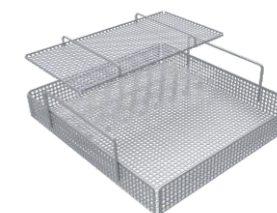
**Injection Module 112 injections
FA-M112**
 ■Can load 56pcs pipettes, 56pcs test tubes and so on.
 ■Injector nozzle: $\phi 2.5 \times H110\text{mm}$
 ■H184, W190, D488mm



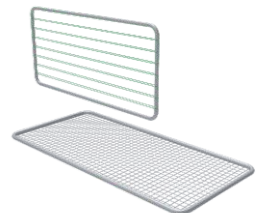
**Full Basket 56
T-101**
 ■Suitable for clean petri dishes
 ■56 seats
 ■H145, W485, D504mm



**Full Basket 56
T-102**
 ■Only used together with T-101
 ■Suitable for clean petri dishes
 ■56 seats
 ■H145, W485, D504mm



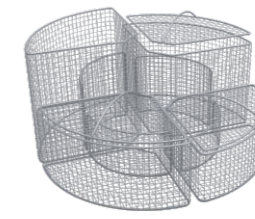
**Full Basket
T-103**
 ■For funnel, beakers, jar, etc
 ■H120, W446, D470mm
Cover G-204
 ■The cover for T-103
 ■H28, W223, D423mm



**Cover net
G-201/G-202**
 ■Basket covering for bottles to prevent the glassware rushed out.
 ■G-201 is suitable for FA-K90
 ■G-202 is suitable for T-101/T-102
 ■H10, W215, D455mm



**Shelf
T-203**
 ■21 spring clips are used to hold the utensils
 ■The distance between the clips is about 60mm
 ■H155, W230, D460mm



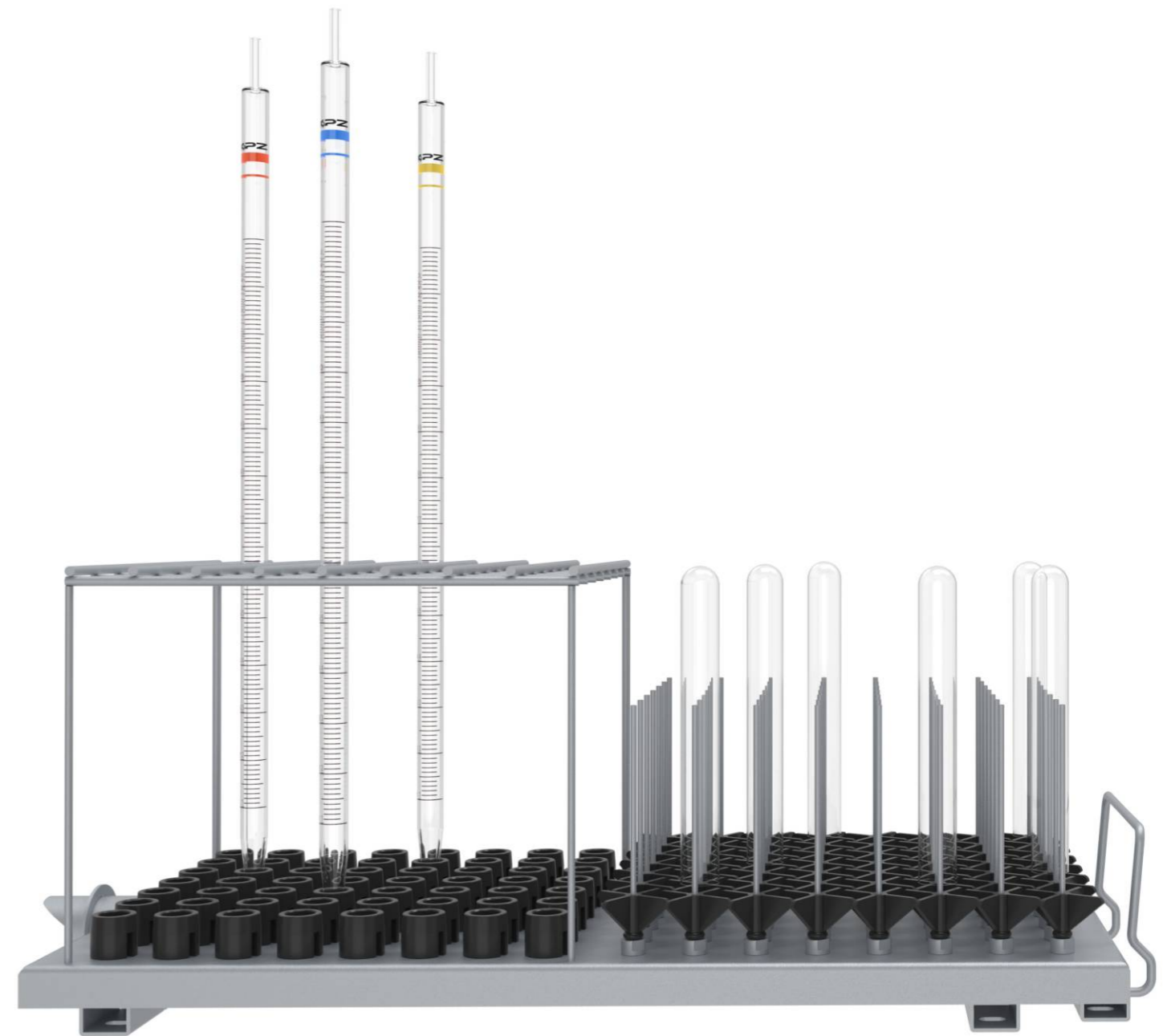
**1/4 Basket
T-401/402/403/404**
 ■H100, W218, D218mm, The maximum is 12*75mm
 ■H127, W218, D218mm, The maximum is 12*105mm
 ■H187, W218, D218mm, The maximum is 12*165mm
 ■H230, W218, D218mm, The maximum is 12*200mm



**Half Basket
T-204/2**
 ■For funnel, beakers, jar, etc
 ■H119, W224, D440mm
Cover G-401
 ■The cover for T-204/2
 ■H21, W210, D210mm

Modules Catalogue

Modules	Moment	Glory	Aurora	Flash	Page
FA-Z01 Upper or Middle level basket frame	○	●	●	●	15
FA-Z03 Upper or Middle level basket frame	○	●	●	●	15
FA-Z05 Upper or Middle level basket frame	○	●	●	●	15
FA-Z02 Lower level basket frame	●	●	●	●	15
FA-Z04 Lower level basket frame	●	●	●	●	15
FA-Z06 Lower level basket frame	○	●	●	●	15
FA-Z07 Upper or Middle level basket frame	○	●	●	●	15
FA-Z11 Full frame injection module	○	●	●	●	15
FA-K03 Injection Module 3 injections	○	●	●	●	16
FA-L09 Injection Module 9 injections	○	●	●	●	16
FA-K10 Injection Module 10 injections	○	●	●	●	16
FA-K11 Injection Module 10 injections	○	●	●	●	16
FA-K11/ Injection Module 10 injections	●	●	●	●	16
FA-K12/1 Injection Module 12 injections	○	●	●	●	16
FA-K14 Injection Module 14 injections	●	●	●	●	16
FA-K15 Injection Module 15 injections	●	●	●	●	16
FA-K18 Injection Module 18 injections	●	●	●	●	16
FA-K20 Injection Module 21 injections	●	●	●	●	17
FA-K21 Injection Module 21 injections	●	●	●	●	17
FA-K22 Injection Module 21 injections	○	●	●	●	17
FA-K30 Injection Module 36 injections	●	●	●	●	17
FA-K31 Injection Module 36 injections	●	●	●	●	17
FA-K44 Injection Module 44 injections	●	●	●	●	17
FA-K66 Injection Module 66 injections	●	●	●	●	17
FA-K90 Injection Module 119 injections	●	●	●	●	17
FA-K91 Injection Module 119 injections	○	●	●	●	17
FA-M65 Injection Module 65 injections	○	●	●	●	18
FA-M112 Injection Module 112 injections	○	●	●	●	18
T-101 Full Basket 56	●	●	●	●	18
T-102 Full Basket 56	●	●	●	●	18
T-103 Full Basket	●	●	●	●	18
G-201/G-202 Cover Net	●	●	●	●	18
T-203 Shelf	●	●	●	●	18
T-204/2 Half Basket	●	●	●	●	18
T-401/402/403/404 1/4 Basket	●	●	●	●	18



Only do professional service for you