

KATRINA

Centrifugeuse VETERINARY

The **KATRINA** Veterinary centrifuge has been designed to meet the intense analysis periods of veterinary laboratories.

Its dedicated accessory and its automatic tube uncapping system during centrifugation offer an undeniable time saving to laboratories during the prophylaxis period for example.

192 tubes can be centrifuged and uncorked at the same time.

PROVEN QUALITY

The «IDEM» application coupled with PFC (Power Factor Control) technology ensures reproducible cycles, making **KATRINA** an ideal centrifuge for simplified productivity.

INTERACTIVE COMMUNICATION

With its large «Smartphone» touch screen colour display, **KATRINA** ensures interactive communication between you and the machine. Backlit display for better visibility. Programming is greatly facilitated by direct access to all cycle parameters in a single window. Compatible with gloved hands.

SECURITY

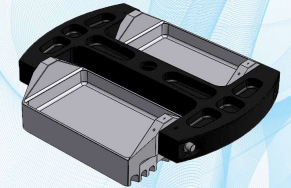
User access as password protection of the protocols ensures increased security and efficiency.



Centrifuge	Description
AFI-C600RE-2P-V	KATRINA Veterinary centrifuge
Specifications	Swing-out rotor
Max Speed	3300 rpm
Max RCF	2252g
Max Loading	192 tubes
T° Range	-20°C/+40°C
Dim. (HxWxD)	95x81x96cm
Pack dim.	114x89x109cm
Weight	352kg

ANIMAL PROPHYLAXIS : 192 tubes automatically uncapped

Model	R
Max Capacity	192 tubes
Angle	90°
RPM Max	3 300
ACR Max	2 252



Accessories

Ref.	AFI-RHD6	AFI-BHD6*	AFI-6TD5	AFI-6TD10	AFI-STICK7	AFI-STICK14

* Set of 2

Tubes

Capacity (ml)	1,6-5	OUTSIDE CAP	INSIDE CAP
Ø x L (mm)	13x75		
Tubes per adapter / rotor	96 192		

Adapter

Hole Ø x L (mm)					
Radius	185				
Max Charge (gr)	#REF!				
Ref.	AFI-HLD-6TD5	AFI-6TD5	AFI-6T5-O	AFI-6TD5-E1*	AFI-6TD5-E2*



* Set of 3

Tubes

Capacity (ml)	10	OUTSIDE CAP
Ø x L (mm)	16x100	
Tubes per adapter / rotor	96 192	

Adapter

Hole Ø x L (mm)				
Radius	185			
Max Charge (gr)	#REF!			
Ref.	AFI-HLD-6TD10	AFI-6TD10	AFI-6T10-O	AFI-6TD10-E

Spécifications - Specifications		
Modèle - Model	Réfrigéré - Refrigerated	
Centrifugeuse de paillasse Benchtop centrifuge		
Référence - Reference	AFI-C600R-2P-V	
Tension nominale - Nominal voltage (+/- 10%)	230V +/-10% Single phase	
Fréquence - Frequency	50 Hz	
Puissance alimentation max. - Power max.	4000 W (1300 W compressor)	
Conformité aux directives Européennes - Compliance with European directives		
2014/35/UE : Directive Basse Tension - Low Voltage Directive	✓	
2014/30/UE : Directive CEM - EMC directive	✓	
2012/19/CE : Directive DEEE - WEEE directive	✓	
2011/65/CE : Directive ROHS - ROHS Directive	✓	
IEC / EN61010-1 (2010) : Sécurité - Safety	✓	
IEC / EN61010-2-020 (2006) : Sécurité - Safety	✓	
EN61326-1(2013) : Compatib. électromagn. - EMC compatibility	✓	
EN55011 2009/A1 (2010) Classe A : Perturbations / Emissions	✓	
EN ISO 14971 (2012) : Gestion des risques - Risk management	✓	
ISO 9001 (2015) : Gestion des risques - Risk management	✓	
ISO 13485 (2016) : Gestion des risques - Risk management	✓	
Caractéristiques principales (voir brochure) - Main specifications (see brochure for full specification)		
	Capacité max. Max. capacity	192 tubes
	RPM max.	3300 rpm
	ACR max Max. RCF	2252g
Dimensions & poids - Dimensions & Weight		
Dimensions (HxLxL) - Foot print Dimensions (HxWxD)	95 x 81 x 96 cm	
Dimensions emballage (HxLxL) - Package dimension (HxWxD)	114 x 89 x 109 cm	
Hauteur couvercle ouvert - Opened lid height	181 cm	
Poids net - Weight unpacked	346 Kg	
Poids emballé - Weight packed	352 kg	



Description de la centrifugeuse / Centrifuge description	
Référence - Reference	AFI-C600R-2P-V
Ecran LCD 5.7" 5.7" LCD screen	✓
Commandes Commands	Touches et écran tactiles Buttons and touchscreen
Contrôle par microprocesseur Microprocessor control	✓
Reconnaissance automatique du rotor Automatic rotor recognition	✓
Détection de balourd Imbalance detection	50g en chargement opposés 50g in opposite loading
Fermeture du couvercle Lid closing	✓
Fonction My IDEM (calcul d'intégral) My IDEM function (Accumulated Centrifugal Effect)	✓
Modes Modes	Au démarrage, au démarrage vitesse/durée At start, At start speed/time
Durées de cycle Cycle duration	10 s à 99h:59min:59s & Impulsion 10 s to 99h:59min:59 s & Pulse
Unités de température Temperature units	°C / °F
Chambre de centrifugation Centrifugation chamber	Inox
Densité max. Max. density	1.2 g / cm ³
Moteur à induction sans charbon Brushless induction motor	✓
Vitesse mini / Maxi Mini / Max Speed	300 / 4400 rpm
Pas de réglage de la vitesse Speed setting step	10 rpm
Précision de vitesse Speed accuracy	± 0.5%
Nombre de programmes Programs number	99 + routine + precool + warmup
Pentes d'accélération & de freinage Acceleration & Braking slopes	10 & 10
Décélération libre Brakeless mode	✓
Système de réfrigération Cooling system	R452A, Sans CFC R452A, CFC free
Plage de réglage en température Range of setting temperature	-20°C → +40°C
Fonction de pré-refroidissement Precool function	✓
Précision en température Temperature accuracy	+/- 1°C
Dissipation de chaleur maximale Heat dissipation	13 640 BTU/h
Niveau sonore max. Max. noise	≤ 61 dB(A)